

You're invited!

Yukon's BioBlitz 2017: Kluane

Environment Yukon invites you to participate in this exciting BioBlitz on **June 23-25, 2017**.

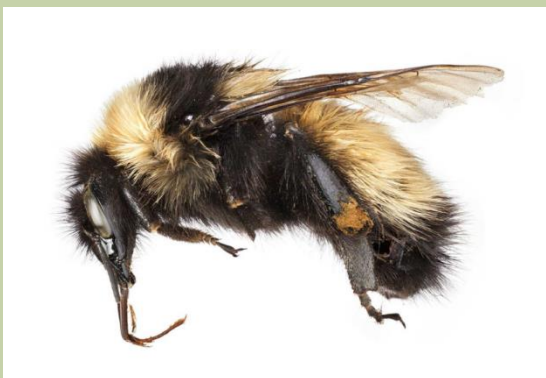


The Kluane region of the Yukon lies at the eastern edge of the great St. Elias Mountains, home to the largest non-polar icefields in the world. Our base of operations will be at the south end of Kluane Lake, an easy 2.5-hour drive from Whitehorse. Kluane is part of the traditional territories of the Kluane First Nation and Champagne and Aishihik First Nations.

Kluane: at the edge of the ice

Kluane fascinates biologists... Why?

- It lies at near edge of Beringia, the vast region stretching from the central Yukon to eastern Siberia that was never glaciated during the Pleistocene Ice Ages. Even though it was glaciated itself, Kluane today contains some of the best habitat analogues for Pleistocene Beringia., and hosts a *number of species found nowhere else in the world*.
- It is home to a *wide variety of ecosystems*: from steppe grasslands, accessible tundra, rivers, wetlands, lakes, and boreal forest.
- Easy access into the wilderness: it is transected by the Alaska Highway, and several short trails take you into the tundra.
- It is home to the Kluane Base of the Arctic Institute of North America, which for decades has hosted scientists from all over the world.



Kluane Bumblebee (*Bombus kluanensis*) was recently discovered and named from a specimen collected on the alpine ridge above the Arctic Institute's base (banner photo above). It is now known from several sites in the Kluane Ranges and at Denali, Alaska.

Yukon's BioBlitz 2017: Kluane

What is a BioBlitz?

- A biological 'treasure hunt' to find as many kinds of living things as possible within a short time.
- A fun way to learn about the animals and plants in your area



- The diverse ecosystems of Kluane are evident in this satellite image.
- *For specialists that register early, free accommodation and work space (including wireless internet) are available at the Arctic Institute's base at the south end of the lake.*
- Commercial accommodation is available in nearby Haines Junction, and camping is also an option.



Yukon Aster (above) is a Beringian endemic that is abundant in the Kluane area, especially on the Slims River delta (left).



The dry steppes of Kluane are home to many fascinating plants and insects, including Asian and prairie disjuncts.

Join us in exploring the living wonders of the Yukon! If you'd like more information, contact Bruce Bennett at:

bruce.bennett@gov.yk.ca